

Lesson 6

- **Terminology – Full, Conasanguineous, Uterine**
- **Sister's class general rules**
- **Sister full's share calculation**

Islamic Laws of Inheritance

Dr. Assaina Beary

- In this lesson the following topics will be covered:
 - **Terminology – Full, Conasanguineous, Uterine**
 - **Sister's class general rules**
 - **Sister full's share**
- This lesson is difficult to understand
- But go through this class again and again till you master it.

Collaterals Sf, Sc, Su, Bu

- 3sisters and 1 brother are included under fixed heirs
- These are secondary heirs
- Excluded by S, SS, SSS, F
- Full Brother exclude consanguineous Brother & Sister
- Uterine Br & Sr are not affected by full or consang. Br & Sr

Sf : **Sister full,**

Sister from same father & mother

Sc : **Sister consanguineous** or **paternal half sister,**

Same father but different mothers

Su : **Sister uterine** or **maternal half sister,**

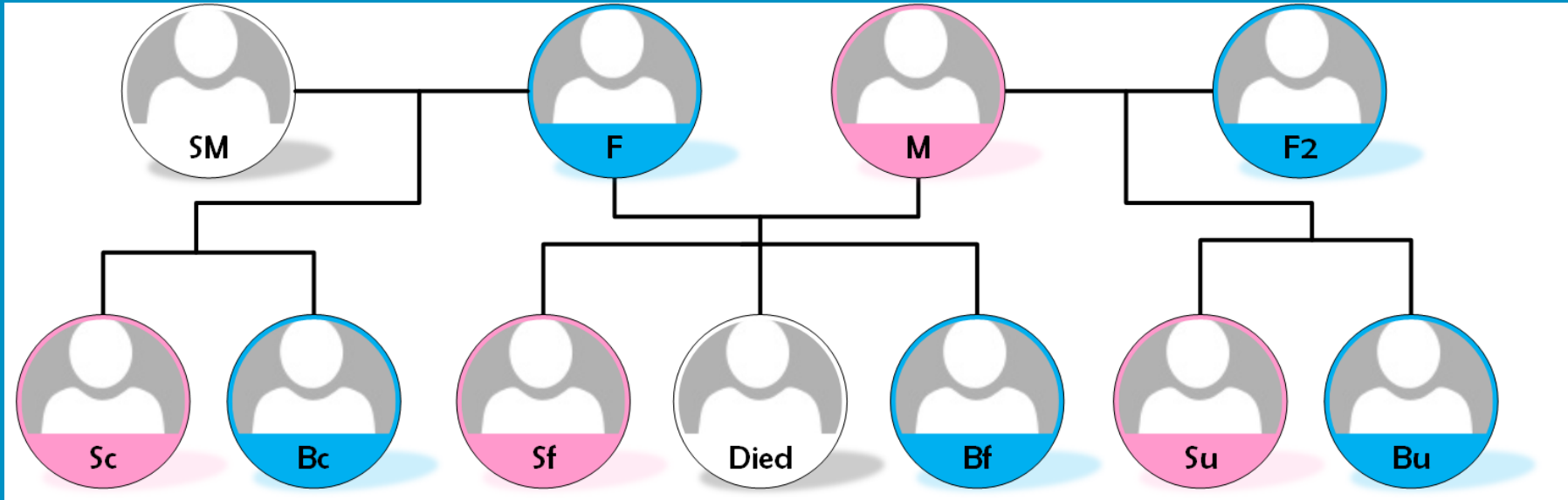
Sister from same mother but fathers are different

Bu : **Brother uterine** or **maternal half brother,**

Same as sister uterine

Brother from same mother but fathers are different

Terminology Full & Consanguineous



F=father, M=mother, SM=stepmother father's second wife,
F2=mother's previous husband before getting married to father,
Sf=sister full, Bf= brother full, Sc,Bc=sister and brother

Sf & Sc

Surah a'nisa verse 176 is the basis as told by prophet(SAS) and quoted by Aboobacker(RA).

Jabir was asking about the sisters share and the present verse was revealed.

Sisters class is almost **similar to daughters class**

Sf is **like D**, **Sc** is **like SD**

Sisters Class - General Rule

1. **S, SS, SSS, F** exclude them
2. In the presence of **equal male counterparts** they become **residuaries**.
E.g.. Bf & Sf and Bc & Sc. With double share to male.
3. If **single** she gets **1/2**
4. If **2 or more than 2** they get **2/3** equally divided
5. If **Sf + Sc** ,then **Sf will get 1/2** and balance of 2/3 i.e. **1/6 goes to Sc**
6. If **Sf are more than 2** then **Sc gets excluded**.
7. In association **with D or SD** they become **residuaries**.

Hudail B. Shurahbil reports.

Once Abu Moosa al ashaari was approached for share of

D, SD, Sf

He told D will get $1/2$ and Sf will get $1/2$.

Then when Ibn Masoud was approached he said it is against prophets verdict which says:

D will get $1/2$ SD = $1/6$ and Sf = balance = $1/3$

Sister full - Shares

1.	Presence of S, SS.. F,	Nil
2.	With TGF	Hanafi- - Nil Other-Diff schemes.
3.	No S, SS... F, TGF With Bf	Balance with Bf 1:2
4.	No S, SS.. F, Bf, TGF With D /SD	Balance alone
5.	Single No S, SS...,F, TGF , Bf, D/SD	1/2
6.	2 or more No S, SS.. F, TGF, Bf, D/SD	2/3

Balance heirs

For easy remembrance of SF share follow these guidelines.

- It is better if the **order of balance heirs** is learnt first and remembered.
- Once the order of balance heir is learnt remembering the SF share becomes easy.

Order of Balance heirs

	Order of Balance heirs
Descendants	S (Son)
	SS (Son's son)
	SSS (Son's son's son)
Ascendants	F (Father)
	TGF (True grand father)
Collaterals	Bf (Brother Full)
	Sf in the presence of D/SD/SSD

Balance heirs

- The order of **balance heirs** is such that **whoever is first in the list will inherit the balance**. If first one is not there second in the list will inherit.
- In the list above **if S is alive all others will be excluded** for balance heir. If S is not alive SS will take the balance and likewise next in the list.

Effect of Balance heirs

S	S is alive He will take the balance
SS	If S is not alive SS will be balance heir
SSS	No S, SS then SSS is balance heir
F	No S, SS, SSS then F is balance heir
TGF	No S, SS, SSS, F then TGF is balance heir
Bf	No S, SS, SSS, F, TGF then Bf is balance heir
Sf	No S, SS, SSS, F, TGF, Bf but D/SD/SSD alive Then Sf is the balance heir

In the next slide see how these balance heirs affect the shares of Sf.

Slide after next it is simplified further for easy remembrance

Effect of Balance heirs on Sf

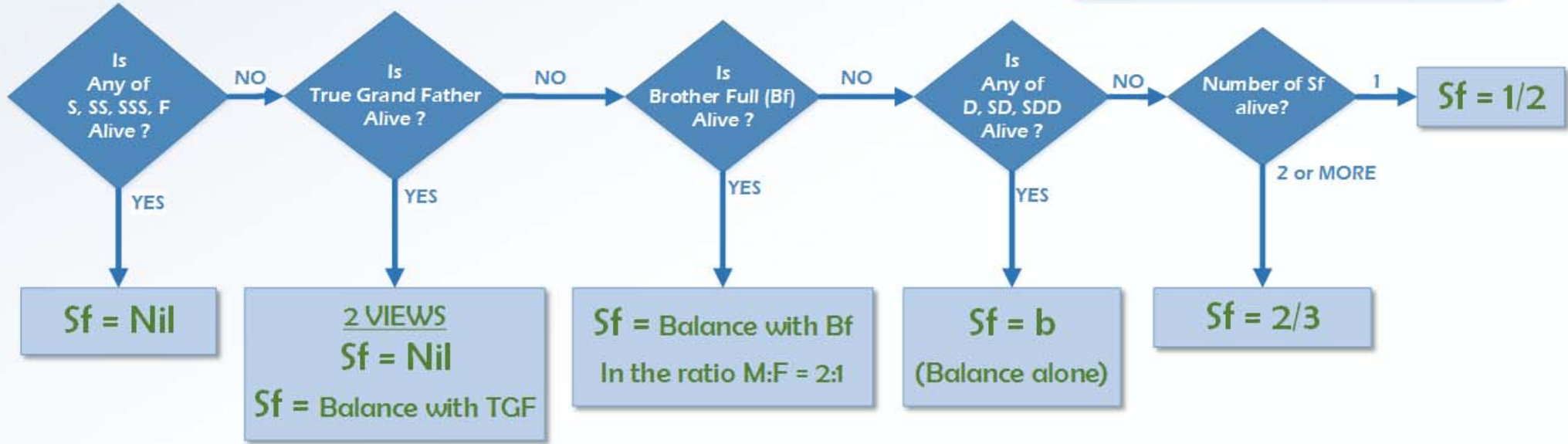
Balance heirs	Condition	Sf share
S	S is alive	Nil
SS	No S but SS alive	Nil
SSS	No S, SS but SSS alive	Nil
F	No S, SS, SSS but F alive	Nil
TGF	No S, SS, SSS, F but TGF alive	Two opinions 1. Nil 2. Balance with TGF
Bf	No S, SS, SSS, F, TGF but Bf alive	Balance with Bf
Sf	No S, SS, SSS, F, TGF, Bf but D/SD/SSD alive	Balance alone
	None from above alive	Single = 1/2
		Two or more = 2/3

Sf Share – Easy to remember

Balance heirs	Sf share
S	Nil
SS	Nil
SSS	Nil
F	Nil
TGF	Two opinions 1. Nil 2. Balance with TGF
Bf	Balance with Bf
Sf (if D/SD/SSD present)	Balance alone
If No S, SS, SSS, F, TGF, Bf, D, SD, SSD	Single = 1/2
	Two or more = 2/3

Learn and remember this well

HOW TO FIND SISTER FULL'S (Sf) SHARE?



Sf - Problem Solving

Now solve the following cases. Living heirs are given.

Find the share of Sf only.

Confirm that they are correct by looking at the answers in the next slide

1.	Bu, Su, Sf, Bf, W	8.	D, Sf, BS (Exception Agnatic heirs rule)
2.	D, SD, 3Sf	9.	3D, 2Sf, Bc.
3.	W, M, Sf, Sc	10.	D, SD, Sf
4.	W, M, 2Sf, Sc	11.	SD, SSD, H, Sf, Sc
5.	W, M, Sf, Sc, SS	12.	2D, H, M, Sf
6.	M, W, Sf, Bf, Sc, Bc	13.	H, M, D, SD, Sf
7.	M, W, Sf, Sc, Bc		

In problem solving cases relations mentioned are to the person died (male/female).

E.g. H, F, D means lady has died leaving the husband, father and daughter.

Sf - Problems - SOLUTIONS

No.	Question	Answer
1.	Bu, Su, Sf, Bf, W	Bu+Su = 1/3 (1/6each), W = 1/4 Bf+Sf = bal = 5/12, Bf = 10/36
2.	D, SD, 3Sf	D = 1/2, SD = 1/6 (Total = 2/3) 3Sf = balance = 1/3, Sf = 1/9 = 2/18
3.	W, M, Sf, Sc	W = 1/4, M = 1/6, Sf = 1/2, Sc = 1/6
4.	W, M, 2Sf, Sc	W = 1/4, M = 1/6, 2Sf = 2/3, Sc = Nil
5.	W, M, Sf, Sc, SS	W = 1/8, M = 1/6, Sf = nil, Sc = nil, SS = balance = 17/24
6.	M, W, Sf, Bf, Sc, Bc	M = 1/6, W = 1/4, Sf+Bf = balance, Bc+Sc = Nil
7.	M, W, Sf, Sc, Bc (as above , no Bf)	M = 1/6, W = 1/4, Sf = 1/2, Bc+Sc = balance = 3/36 (Bc = 2/36)

Note: Actual shares may vary, after considering other heirs.

Shares vary when Radd or Awl is required to be applied.

Sf - Problems - SOLUTIONS

No.	Question	Answer
8.	D, Sf, BS (Exception Agnatic heirs rule)	D = 1/2, Sf = balance = 1/2, BS = nil, excluded by Sf
9.	3D, 2Sf, Bc.(If D is not there this rule is not valid)	3D = 2/3, 2Sf = balance = 1/2, Bc = nil, excluded by Sf
10.	D, SD, Sf	D = 1/2, SD = 1/6, Sf = bal = 1/3
11.	SD, SSD, H, Sf, Sc	SD = 1/2, SSD = 1/6, H = 1/4 Sf = balance = 1/12, Sc = nil -excluded
12.	2D, H, M, Sf	2D = 2/3, H = 1/4, M = 1/6 2Sf = balance = nil (Awl effect) 2D = 8/13, H = 3/13, M = 2/13
13.	H, M, D, SD, Sf	H = 1/4, M = 1/6, D = 1/2, SD = 1/6, Sf = balance = nil. (Awl effect for Others)

Note: Actual shares may vary, after considering other heirs.

Shares vary when Radd or Awl is required to be applied.

Sf - Sum up

Pr./Sec	Secondary Heir
Excluded by	F, TGF ?, S, SS, SSS
Excludes	More than 2 exclude Sc, With D/SD Exclude Sc & Bc (As residuary)
Share fraction	Refer back
Effect on others	Reduces share of mother.
Effect of others	D &SD covert her into Residuary Bf converts her into Residuary
Effect of Awl	Share reduces
Effect of Radd	Eligible
Special occasion	With TGF

رَبَّنَا تَقَبَّلْ مِنَّا إِنَّكَ أَنْتَ السَّمِيعُ الْعَلِيمُ

وَتُبَّ عَلَيْنَا إِنَّكَ أَنْتَ التَّوَّابُ الرَّحِيمُ

اللهم اغفر لنا، يا أرحم الراحمين

رَبَّنَا آتِنَا فِي الدُّنْيَا حَسَنَةً وَفِي الْآخِرَةِ حَسَنَةً وَقِنَا عَذَابَ النَّارِ

رَبَّنَا ظَلَمْنَا أَنفُسَنَا وَإِن لَّمْ تَغْفِرْ لَنَا وَتَرْحَمْنَا لَنَكُونَنَّ مِنَ الْخَاسِرِينَ

اللهم صلِّ وسلِّم وبارك على عبدك ورسولك محمد سيد الأولين

والآخرين، وعلى آله وصحبه أجمعين